



ZWEIGART®

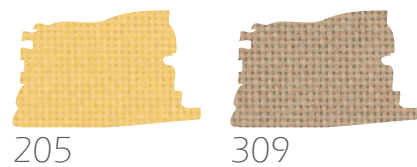
MADE IN GERMANY

FEATHERS



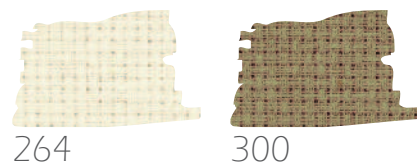


3835 LUGANA



|||| 10,0 / cm = 25 ct. △ 52 % CO 48 % MD
 * 140 cm 55" 48 x 68 cm

3706 STERN-AIDA



|||| 5,4 / cm = 14 ct. △ 100 % CO
 * 110 cm 43" 48 x 53 cm

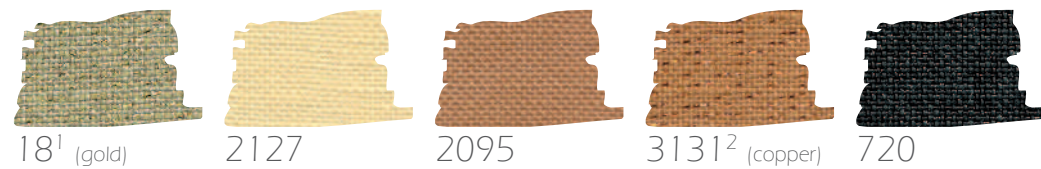
2-fd: Kreuzstich / Cross stitch · 1-fd: Rückstich / Back stitch



- 926 · 712 · 2403
 - 305 · 744 · 0109
 - 877 · 3835 · 1704
 - 371 · 975 · 2602
 - 235 · 414 · 1801
 - 236 · 3799 · 1713
 - 403 · 310 · 2400
- ANCHOR · DMC · MADEIRA



3609 BELFAST

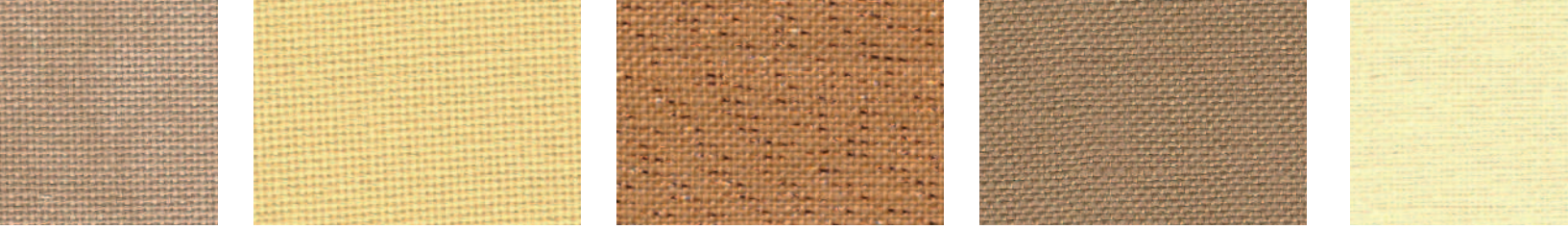


|||| 12,6 / cm = 32 ct. △ 100 % LI
 * 140 cm 55" 48 x 68 cm
 1 95% LI, 5% met. PES
 2 96% LI, 4% met. PES

3984 MURANO



|||| 12,6 / cm = 32 ct. 48 x 68 cm
 * 140 cm 55" △ 52 % CO 48 % MD



ZWEIGART®

Zweigart & Sawitzki GmbH & Co. KG

Postfach 120

D-71043 Sindelfingen

Germany

www.zweigart.com

Druckfehler vorbehalten
Subject to printing errors

Farbabweichungen möglich
Differences in colour are possible

Printed in Germany 09/19
20012/12

