

Gute-Laune-Bad

Stick-Ideen · Needlework ideas · Ideas bordadas · Идеи для вышивки

Kreuzstich

Cross Stitch · Punto de cruz · Вышивка крестом



Handarbeitsstoffe
Needlework fabrics
Telas para labores
Материалы для рукоделия

Gute-Laune-Bad
Bright Bathroom Accessoires
Buen humor en el baño
Ванная хорошего настроения

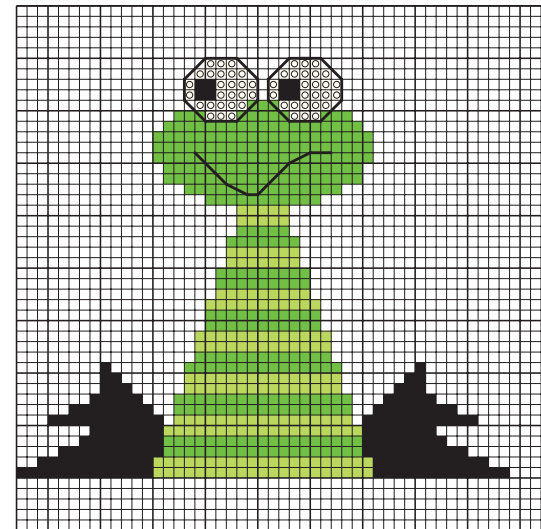
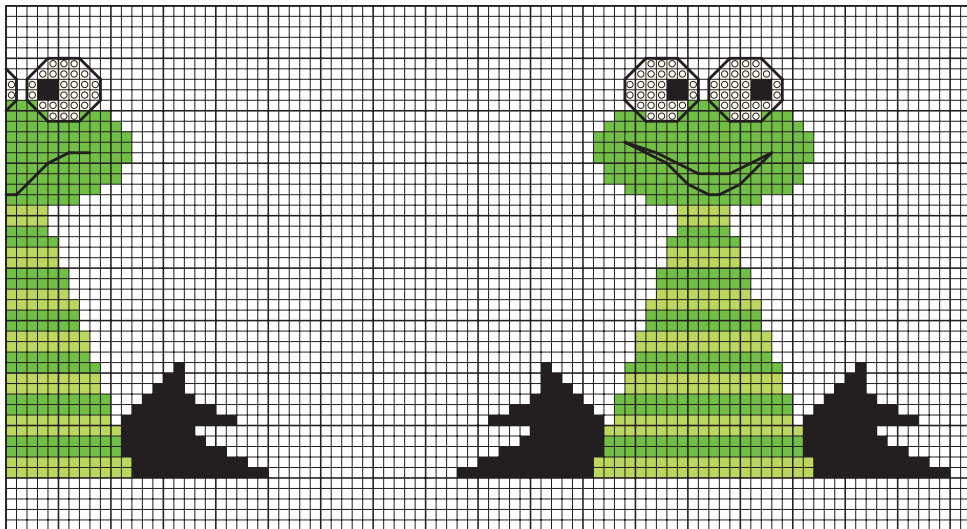
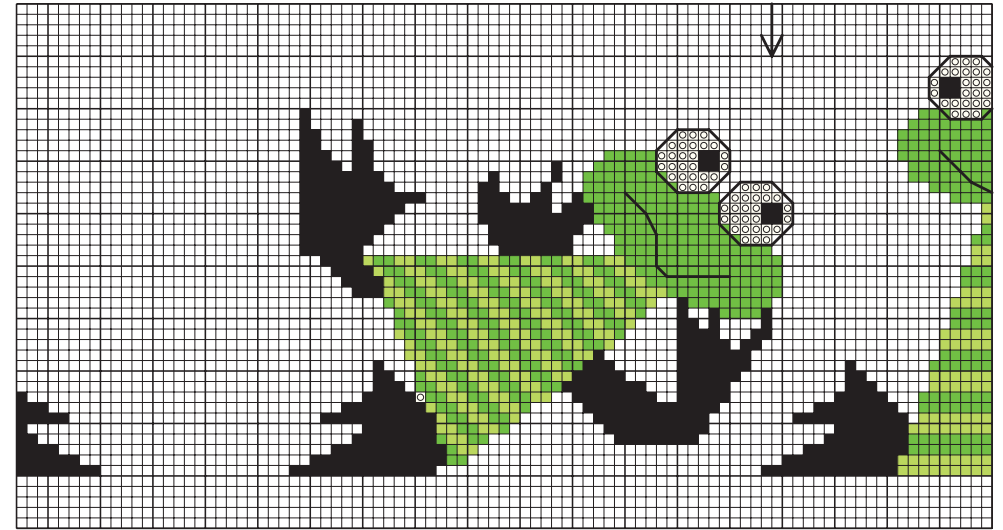
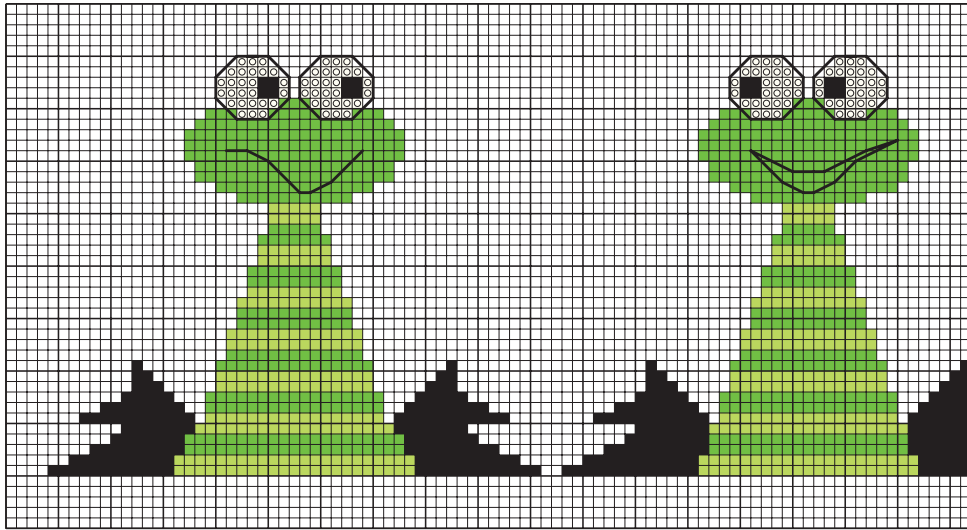
27 Frottee-Gästetuch · Terry guest towel · Toalla de invitado de rizo · гостевое полотенце из эпонжа:
 30 x 50 cm · 12" x 20"
 70 Stiche · stitches · puntadas · клеток = 10 cm · 18 count per inch
 Stickfeld · embroidery area · superficie bordada · площадь вышивки
 26 x 196 Stiche · stitches · puntadas · клеток
 100% Baumwolle · cotton · algodón · хлопок

28 Frottee-Handtuch · Terry hand towel
 Toalla de rizo · полотенце из эпонжа:
 50 x 100 cm · 20" x 39"
 70 Stiche · stitches · puntadas · клеток = 10 cm · 18 count per inch
 Stickfeld · embroidery area · superficie bordada · площадь вышивки
 50 x 328 Stiche · stitches · puntadas · клеток
 100% Baumwolle · cotton · algodón · хлопок

29 Frottee-Duschtuch · Terry bath towel · Toalla de baño de rizo · душевое полотенце из эпонжа:
 70 x 140 cm · 28" x 55"
 70 Stiche · stitches · puntadas · клеток = 10 cm · 18 count per inch
 Stickfeld · embroidery area · superficie bordada · площадь вышивки
 70 x 463 Stiche · stitches · puntadas · клеток
 100% Baumwolle · cotton · algodón · хлопок

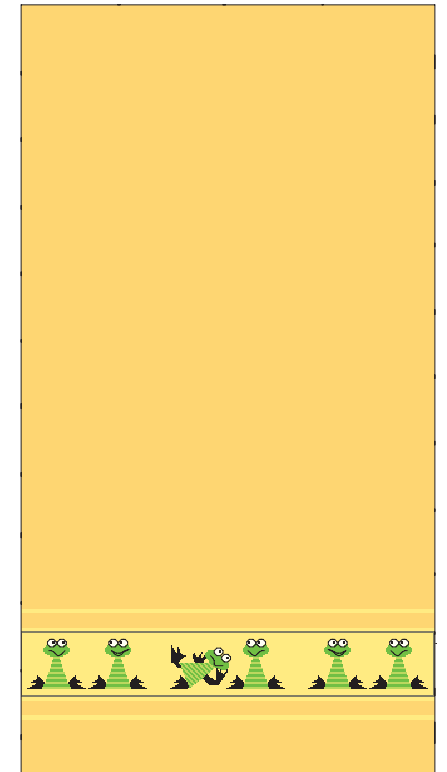
Design: Margret Schittenhelm
 Fotos: Jeanette Schuster

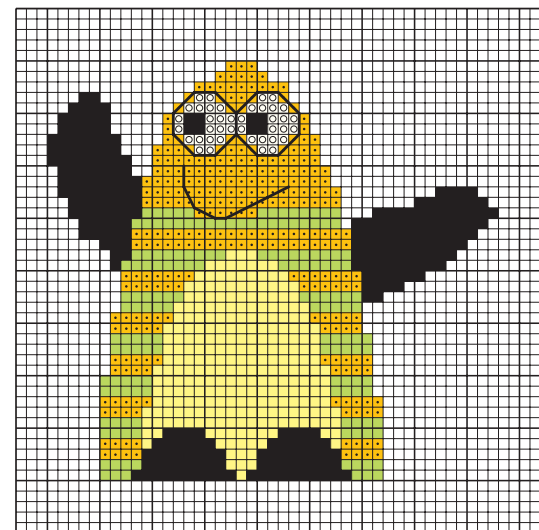
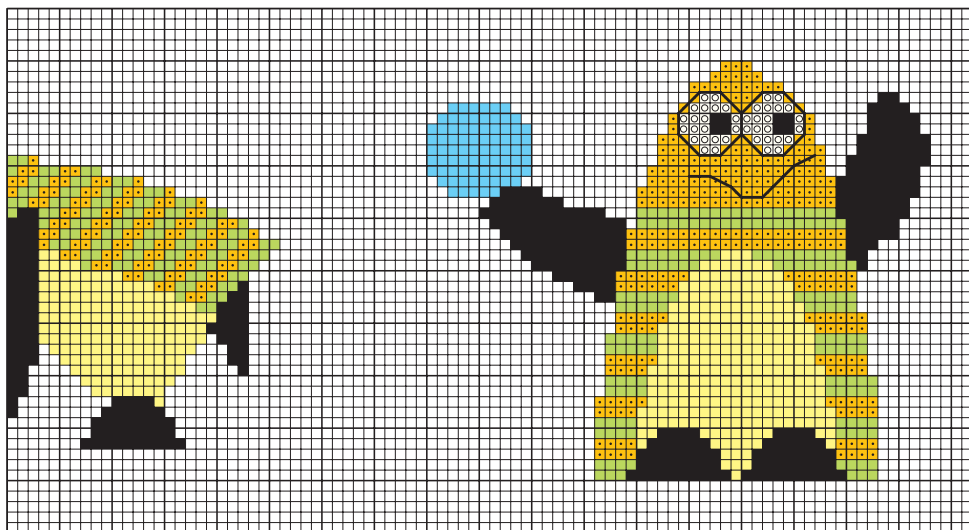
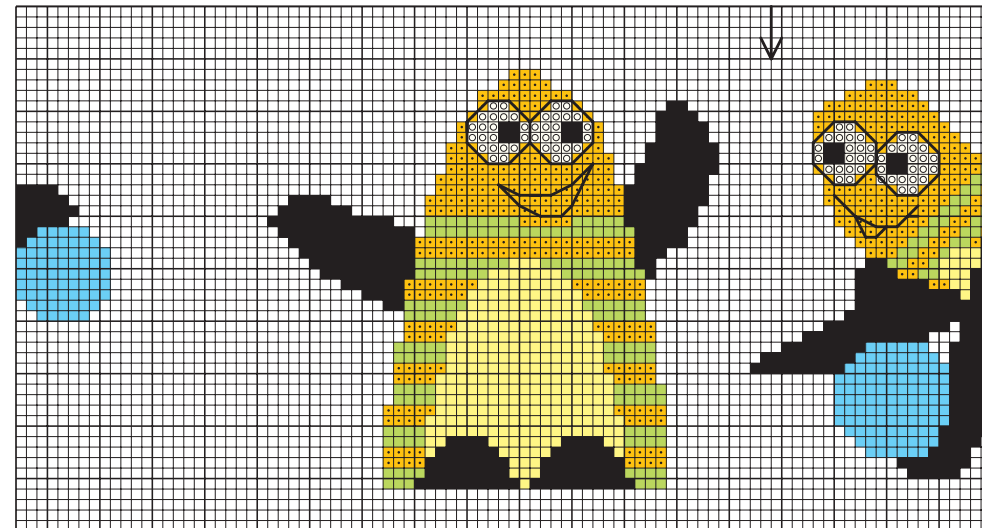
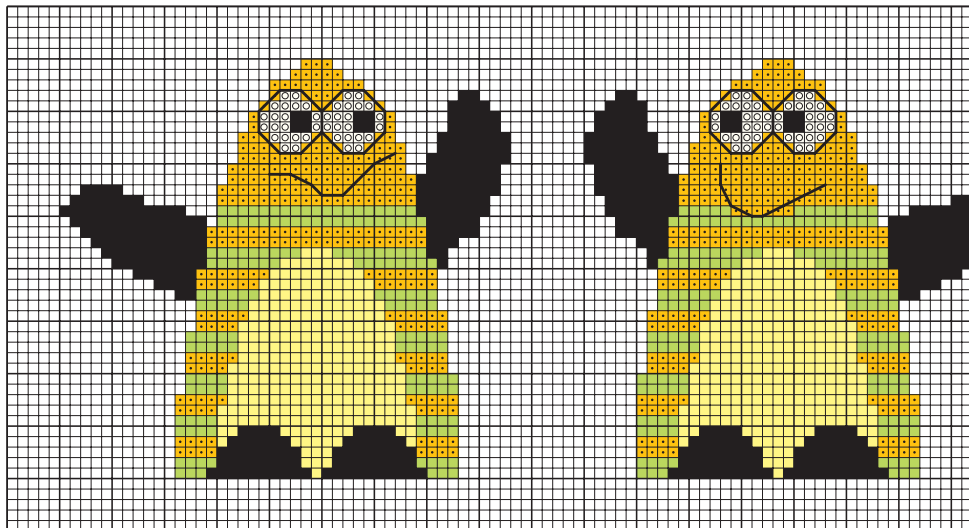




403	2	238	254	Anchor
310	blanc	703	472	DMC
2400	2402	1306	1409	Madeira
1	1	1	1	Strängchen · skeins madejita · моток

① 28/20
Handtuch · handtowel
toalla · полотенце
50 x 100 cm · 20" x 39"

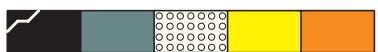
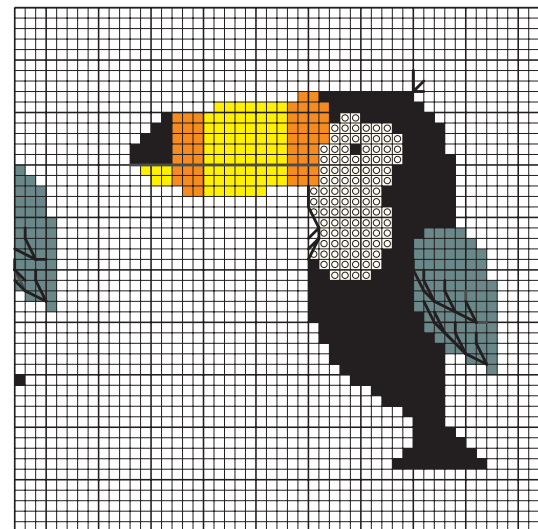
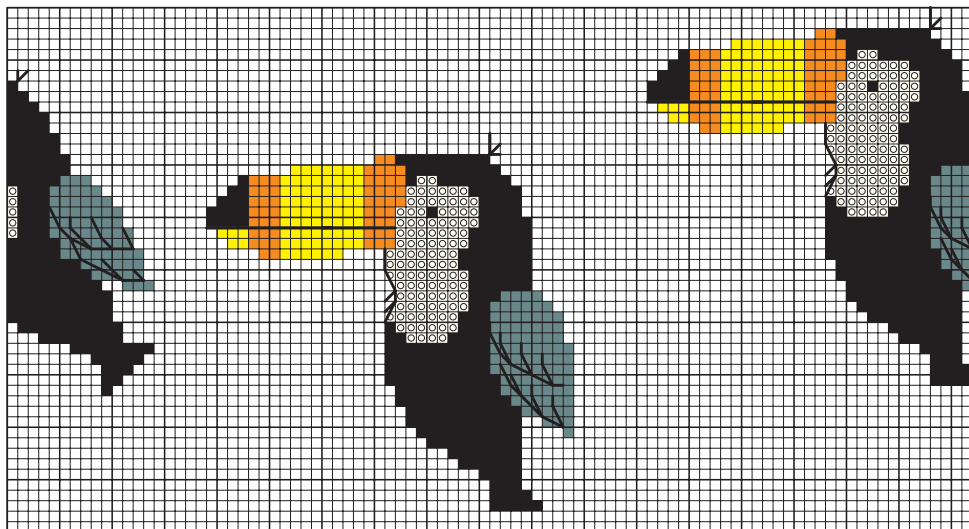
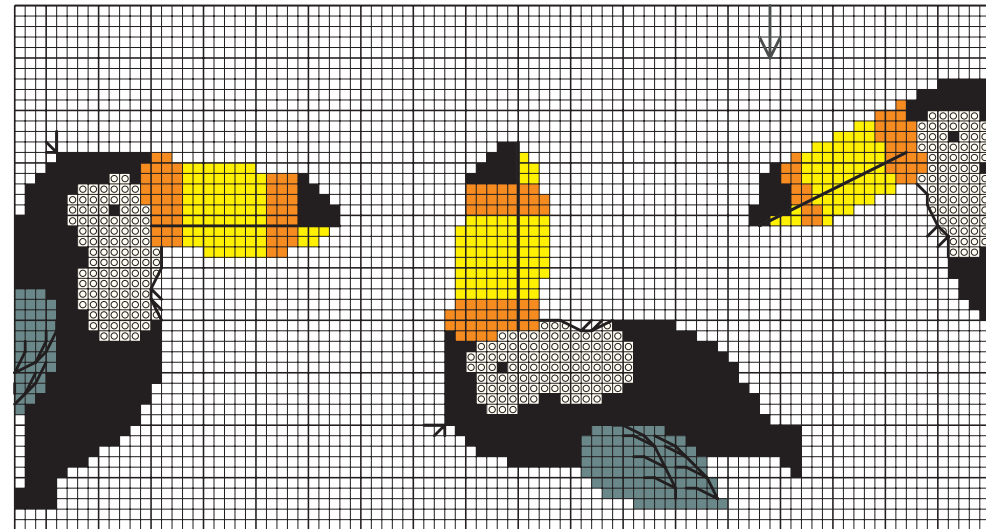
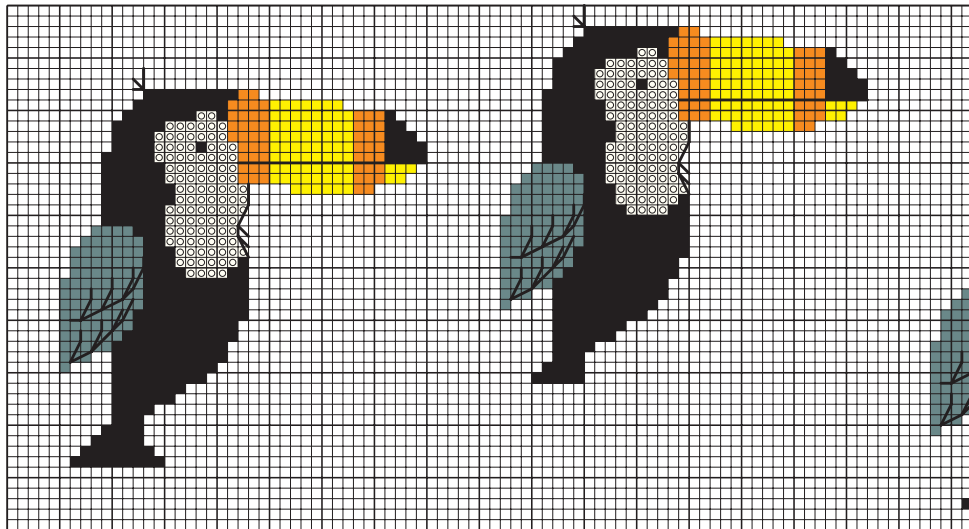




403	2	254	293	298	1090	Anchor
310	blanc	472	727	725	996	DMC
2400	2402	1409	0110	0107	1103	Madeira
1	1	1	1	1	1	Strängchen · skeins madejita · моток

2 28/42
Handtuch · handtowel
toalla · полотенце
50 x 100 cm · 20" x 39"



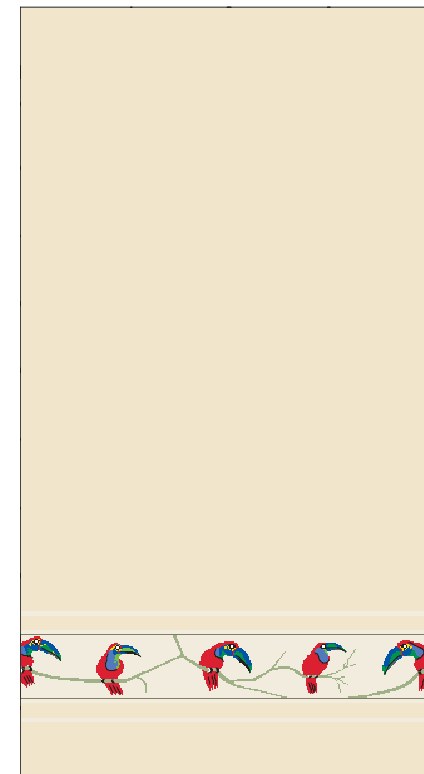
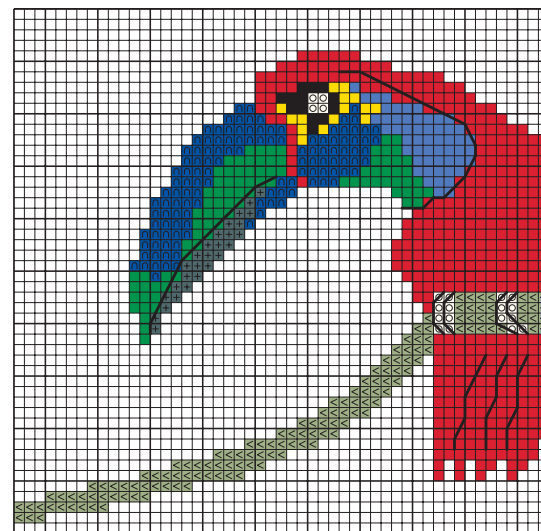
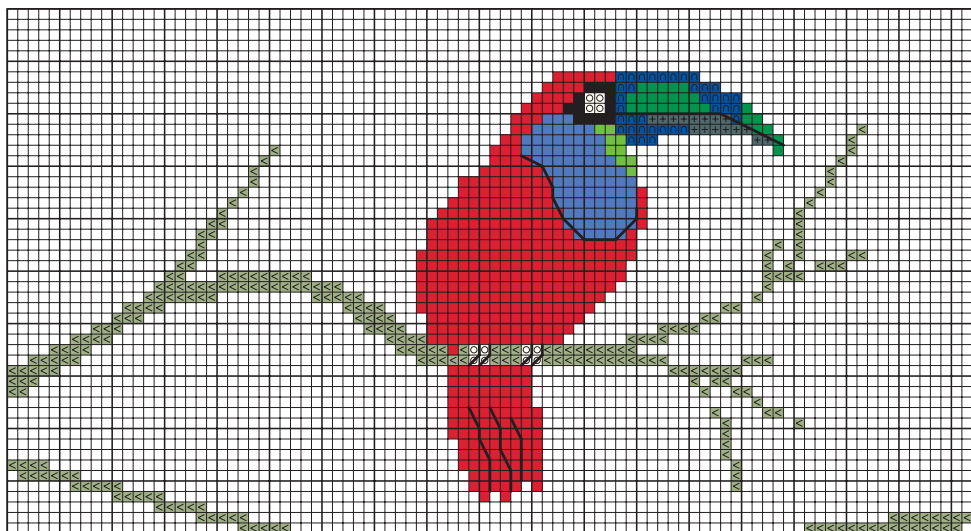
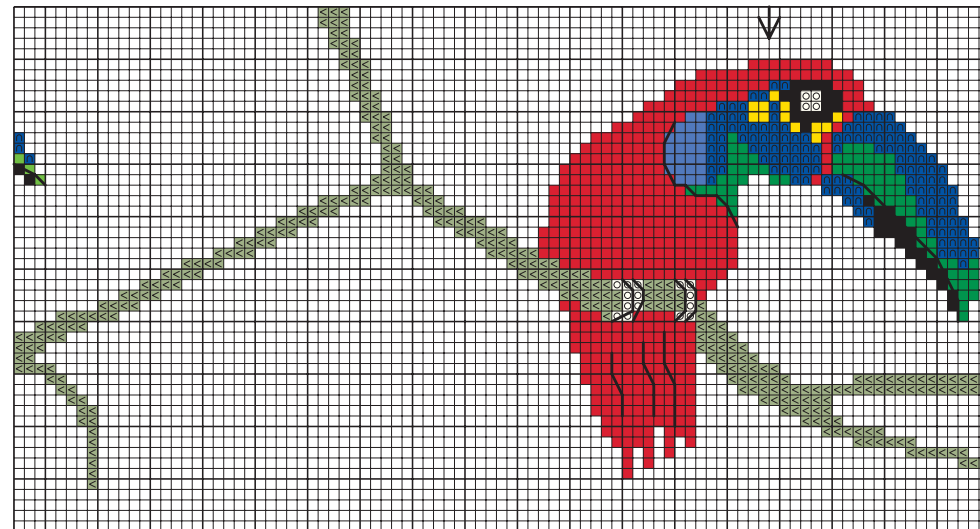
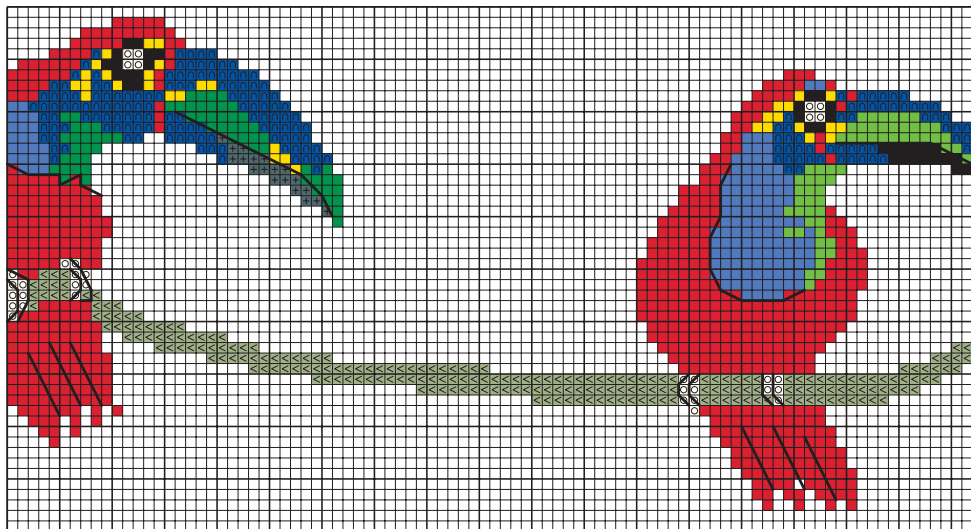


403	400	2	290	316	Anchor
310	317	blanc	973	740	DMC
2400	1714	2402	0105	0202	Madeira
1	1	1	1	1	Strängchen · skeins madejita · моток

3 28/49

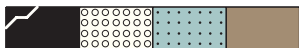
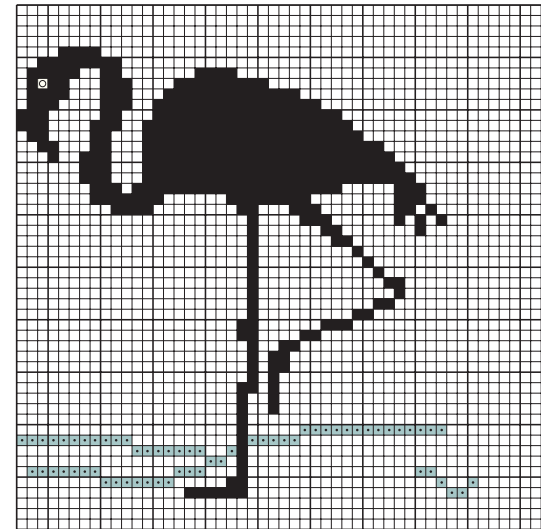
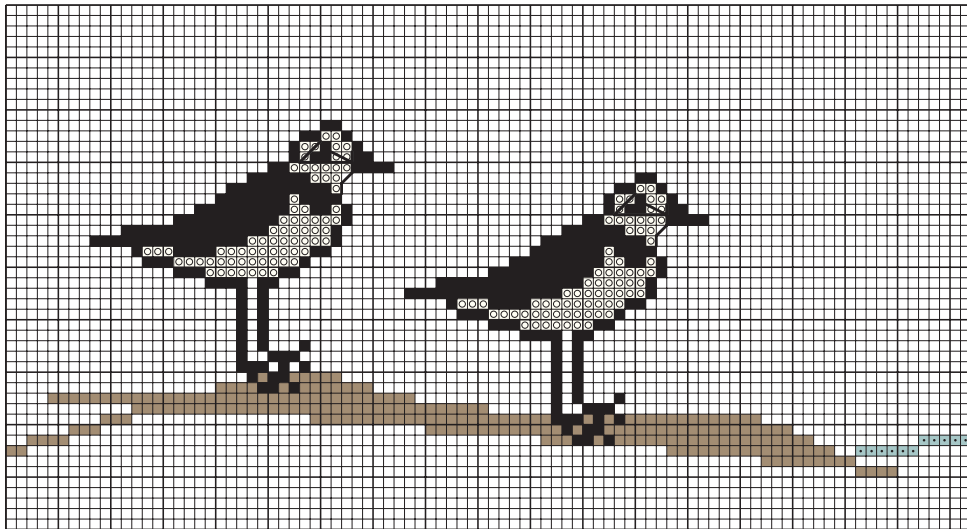
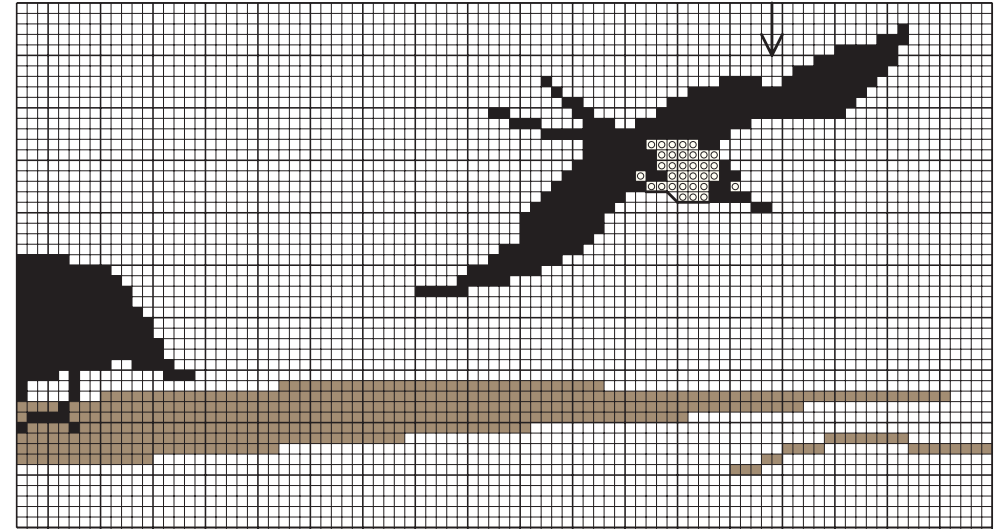
Handtuch · handtowel
toalla · полотенце
50 x 100 cm · 20" x 39"





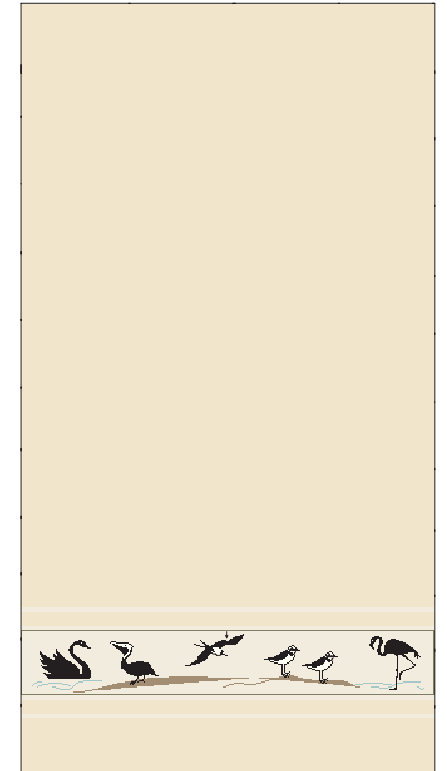
403	236	2	297	46	132	131	228	238	859	Anchor
310	3799	blanc	973	666	797	798	700	703	3053	DMC
2400	1713	2402	0105	0210	0912	0911	1303	1306	1513	Madeira
1	1	1	1	1	1	1	1	1	1	Strängchen · skeins madejita · МОТОК

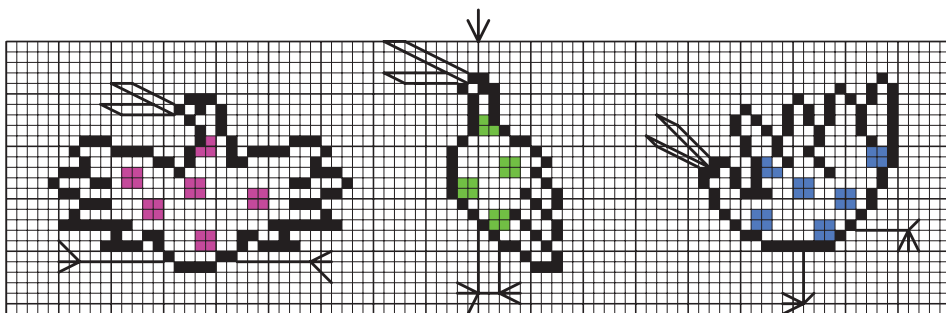
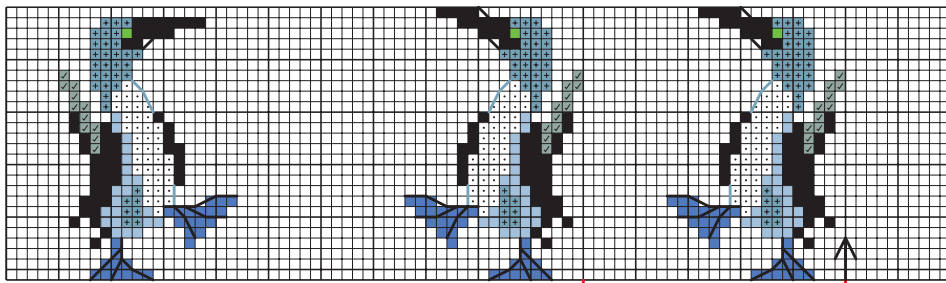
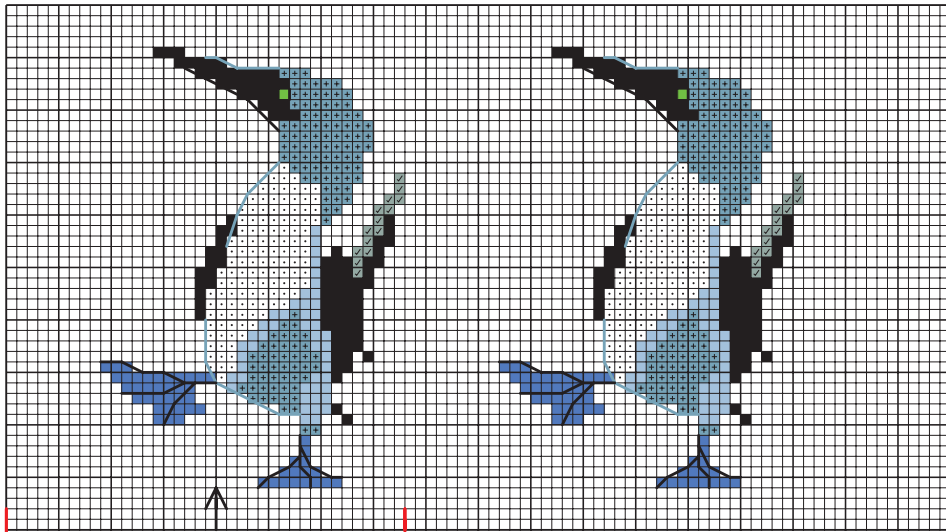
4 28/30
Handtuch · handtowel
toalla · полотенце
50 x 100 cm · 20" x 39"



403	2	848	903	Anchor
310	blanc	927	840	DMC
2400	2402	1708	2002	Madeira
1	1	1	1	Strängchen · skeins madejita · MOTOK

5 28/30
Handtuch · handtowel
toalla · полотенце
50 x 100 cm · 20" x 39"





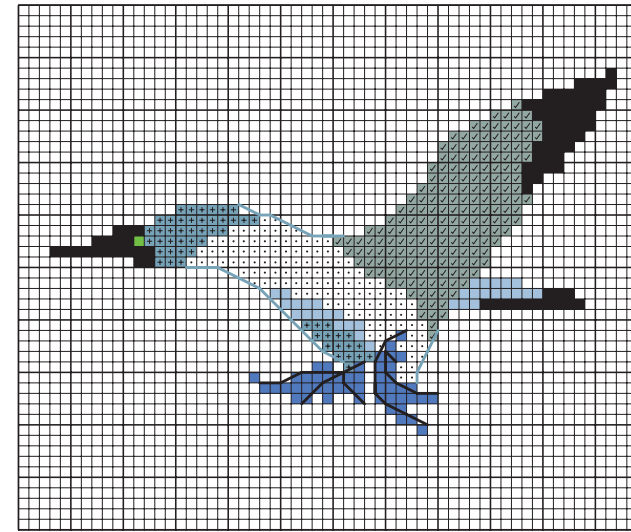
403	87	238	131
310	3607	703	798
2400	0708	1306	0911
1	1	1	1

Anchor
DMC
Madeira
Strängchen · skeins
madejita · МОТОК

6 27/20

7 27/30

Gästetuch · guest towel · toalla de invitado · гостевое полотенце
30 x 50 cm · 12" x 20"



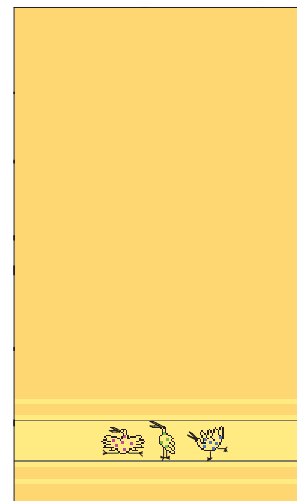
Anchor	DMC	Madeira	7	8
403	310	2400	1	
1	B5200	2401	1	
399	318	1802	1	
1033	932	0909	1	
1034	931	1711	1	
238	703	1306	1	
131	798	0911	1	

Strängchen · skeins
madejita · МОТОК

8 28/1

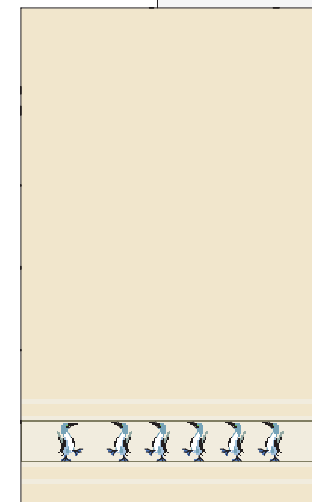
Handtuch · handtowel
toalla · полотенце
50 x 100 cm · 20" x 39"

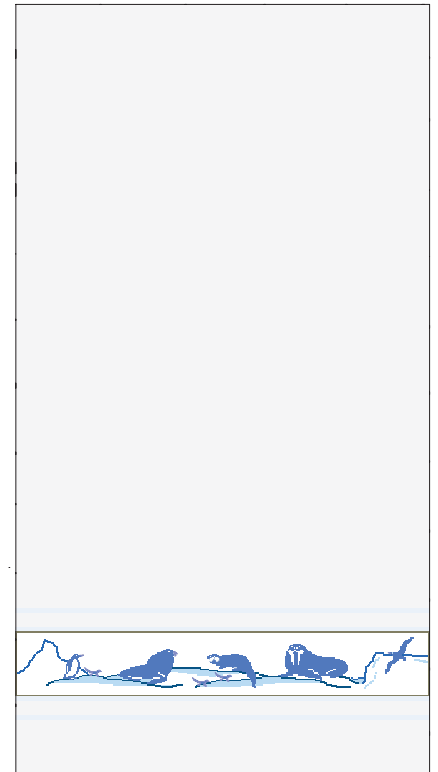
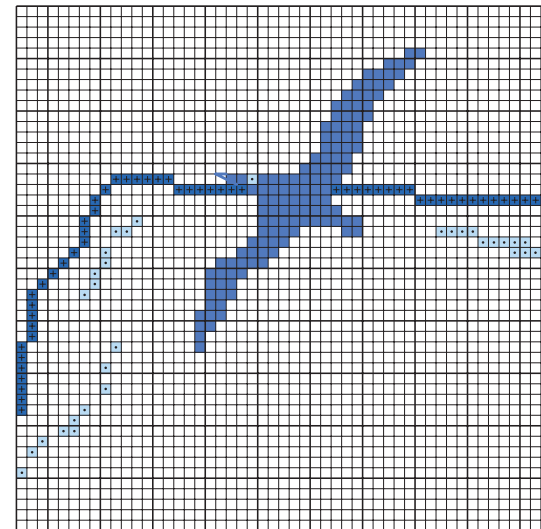
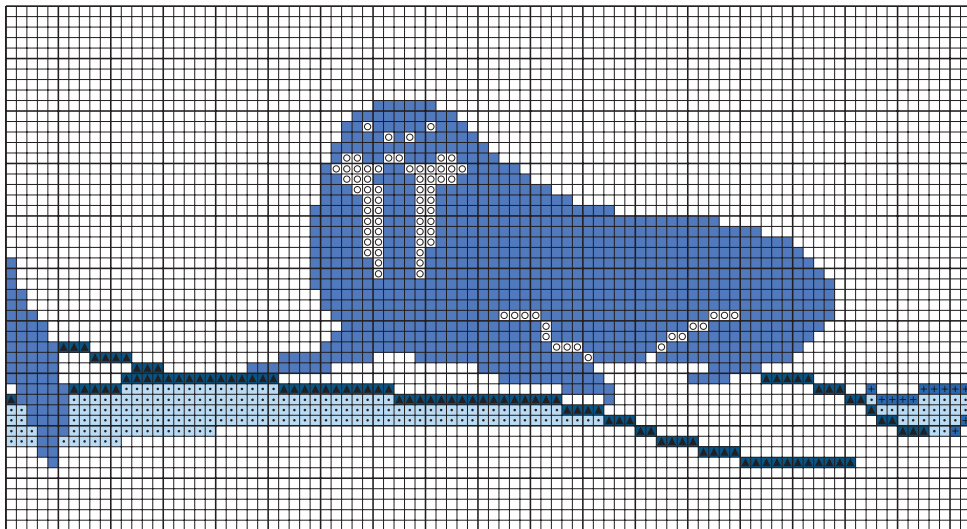
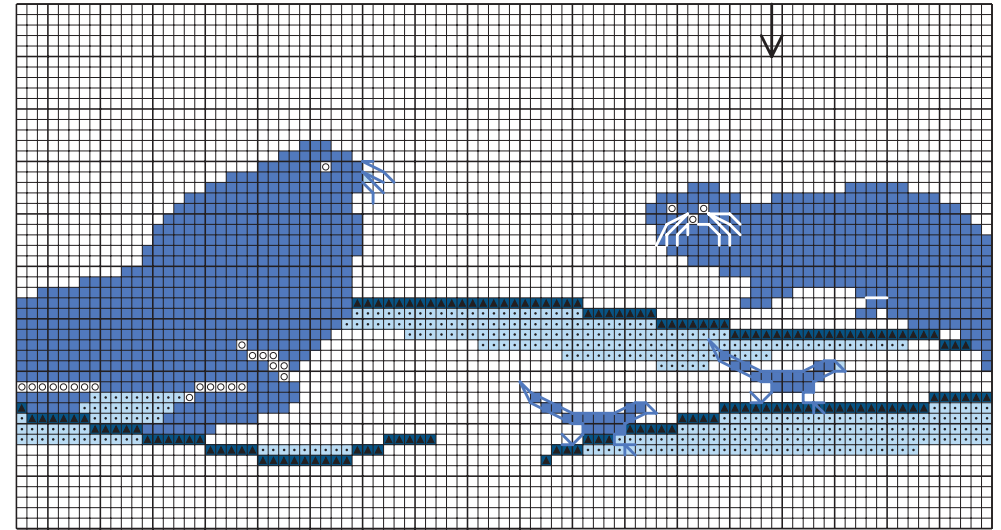
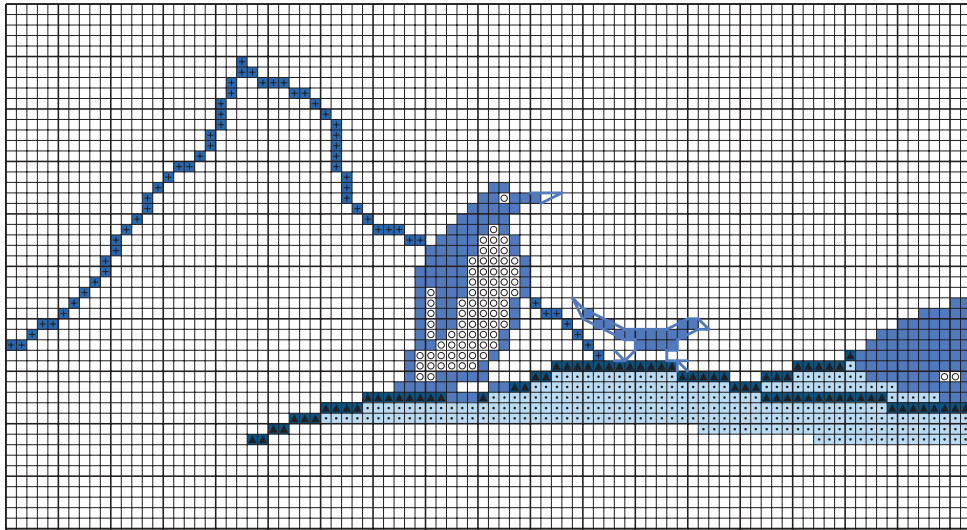
6



8

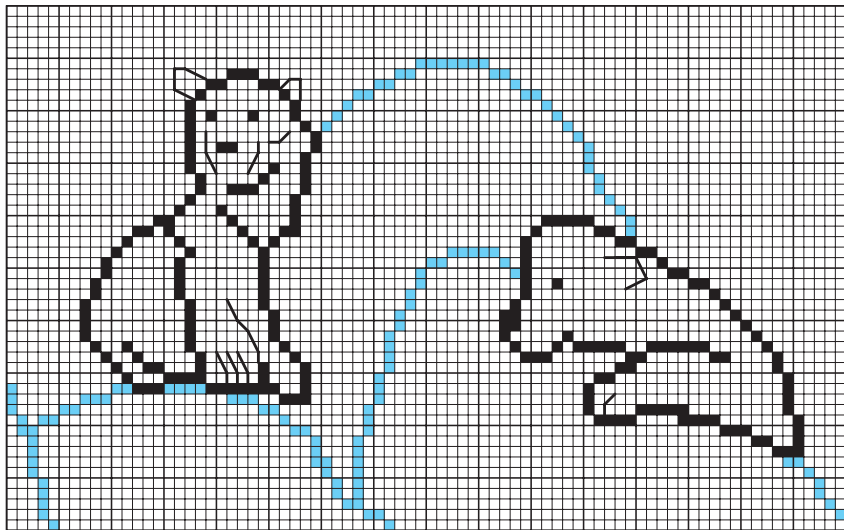
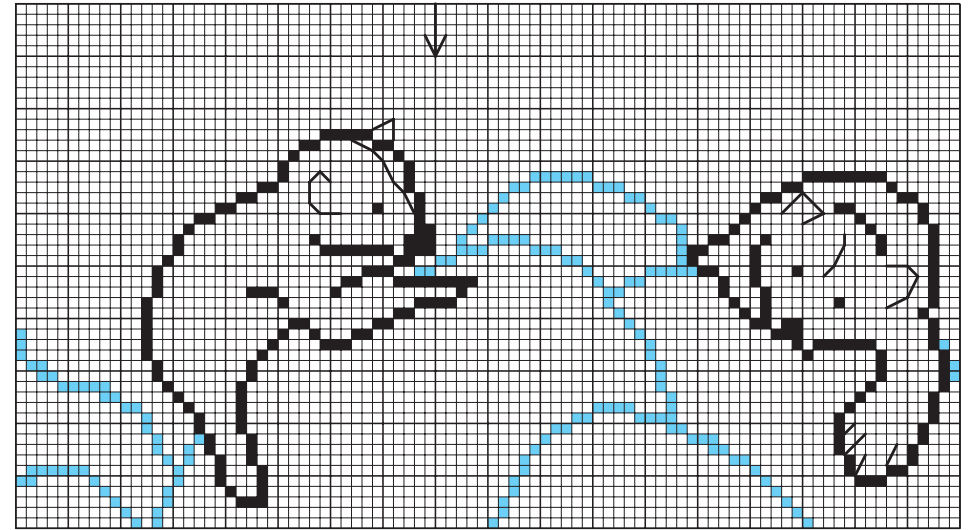
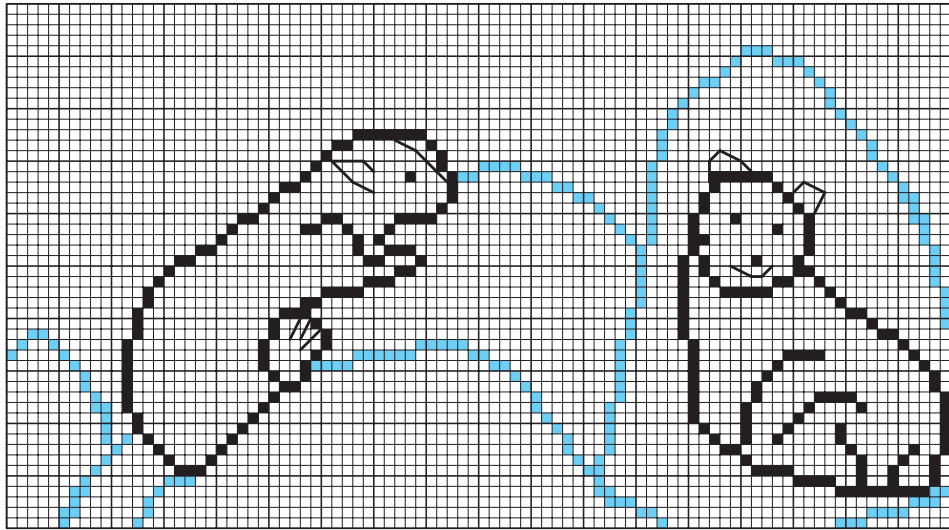
7



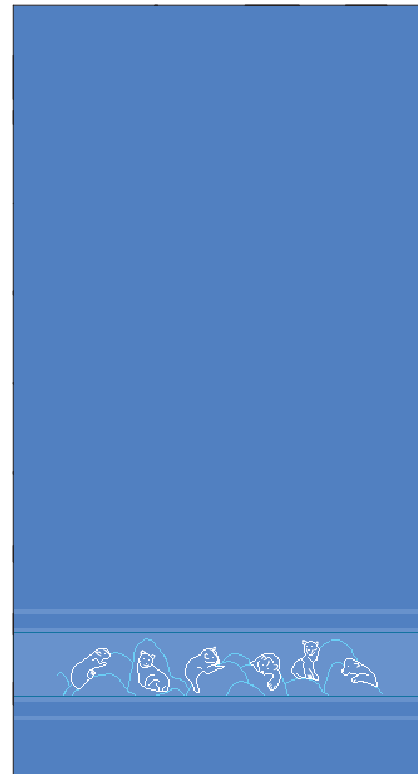


131	147	148	1	9159	Anchor
798	797	311	B5200	828	DMC
0911	0912	1005	2401	1014	Madeira
1	1	1	1	1	Strängchen · skeins madejita · моток

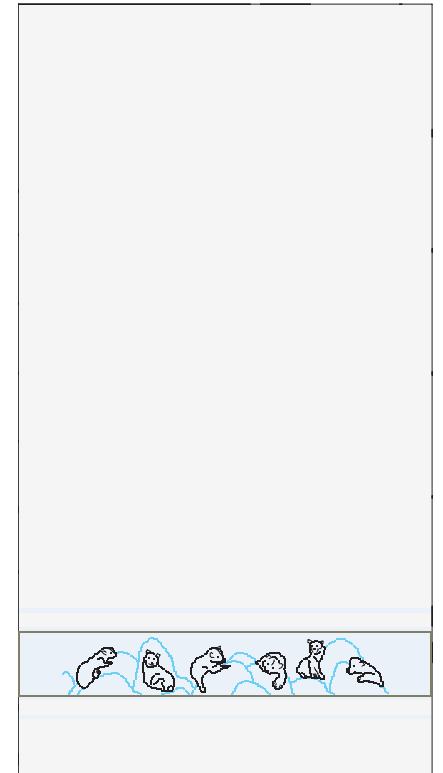
9 28/1
 Handtuch · handtowel
 toalla · полотенце
 50 x 100 cm · 20" x 39"



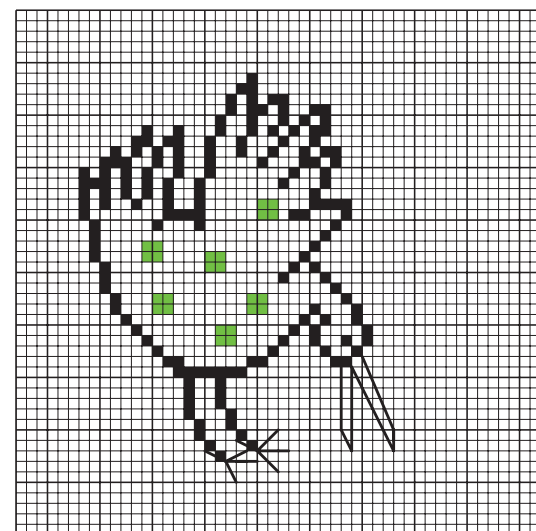
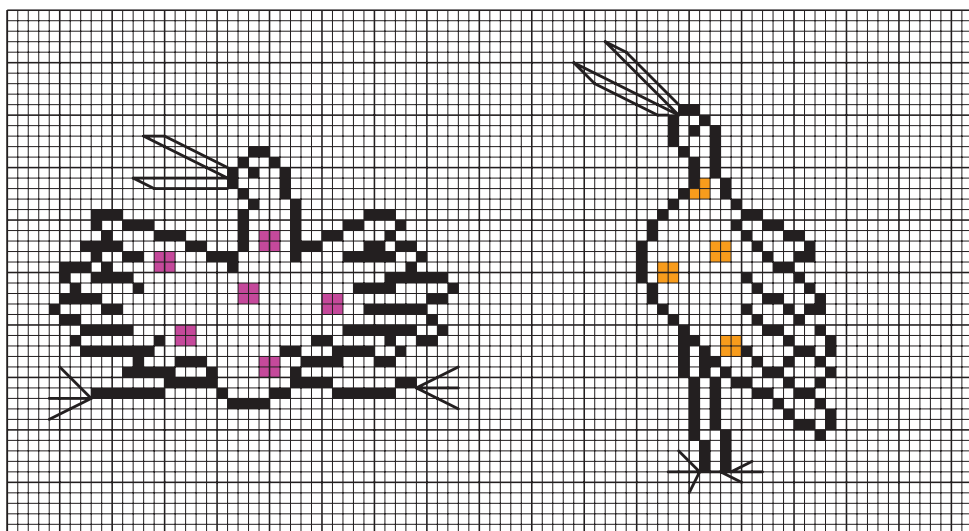
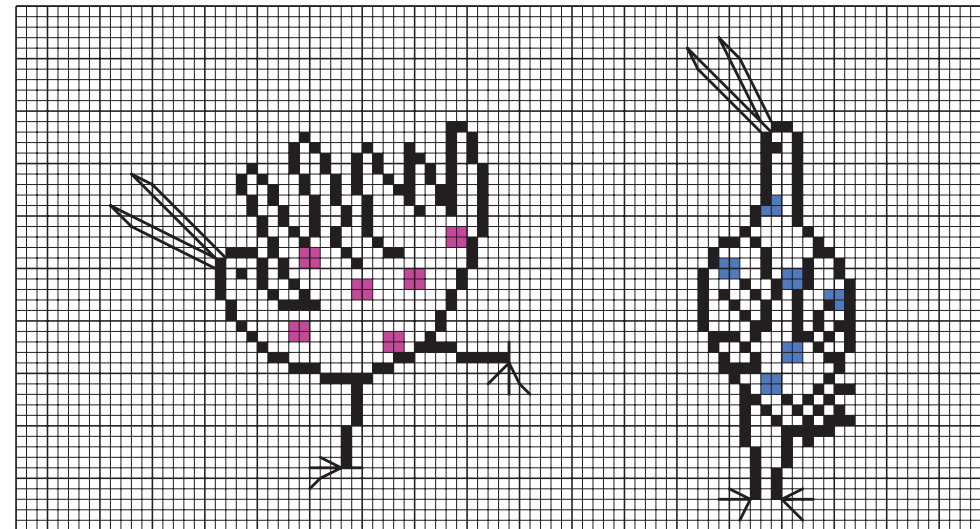
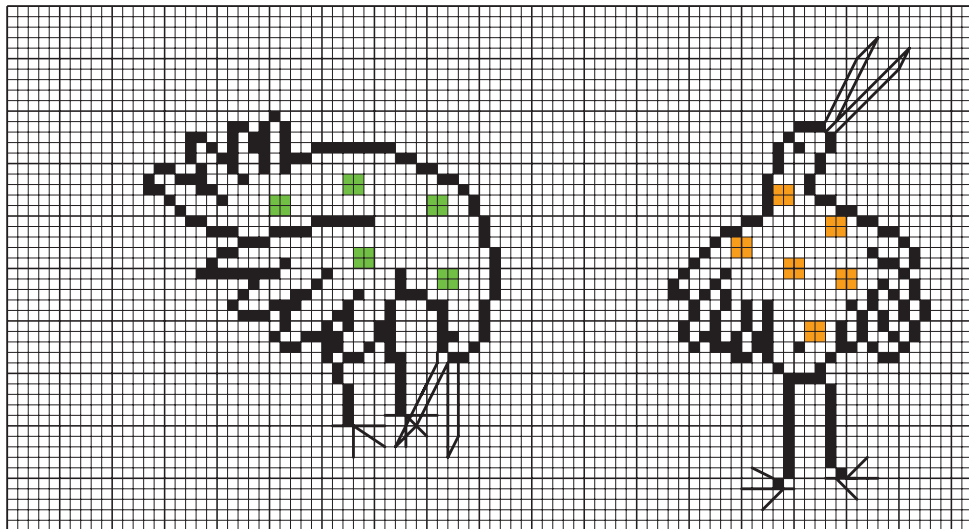
10



11



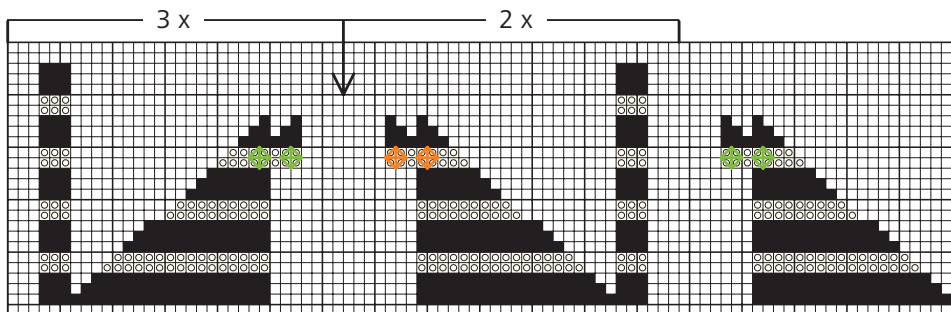
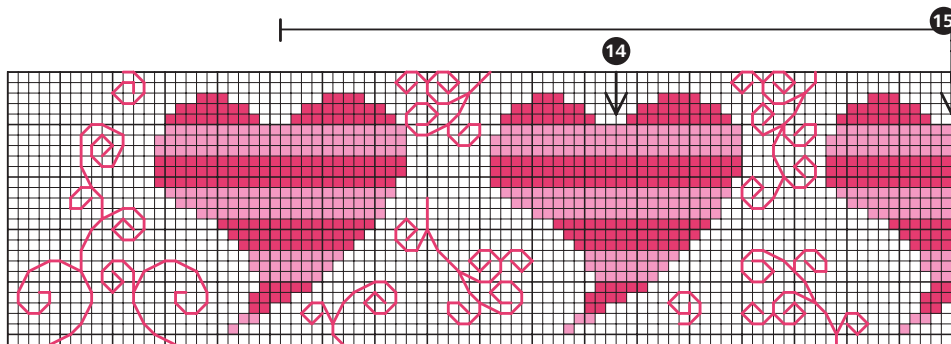
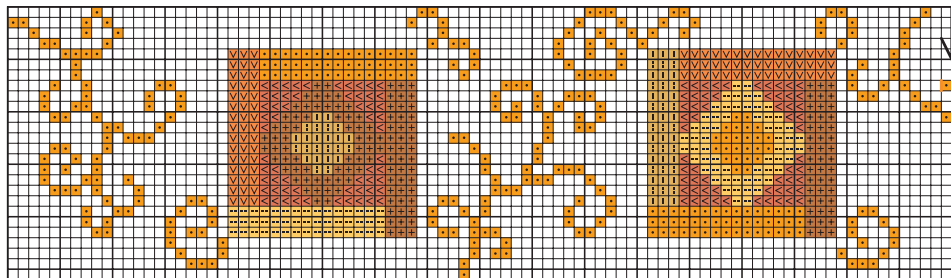
403	1090	1	Anchor
310	996	B5200	DMC
2400	1103	2401	Madeira
10	-	1	Strängchen · skeins
11	1	1	madejita · MOTOK



403	238	304	87	131	Anchor
310	703	741	3607	798	DMC
2400	1306	0202	0708	0911	Madeira
1	1	1	1	1	Strängchen · skeins madejita · моток

12 28/1
Handtuch · handtowel
toalla · полотенце
50 x 100 cm · 20" x 39"





13 27/49

14 27/42

Anchor	DMC	Madeira	
	349	301	2306 1
	338	356	0402 1
	324	721	0308 1
	304	741	0202 1
	302	742	2513 1
	363	436	2301 1

15 27/1

16 27/50

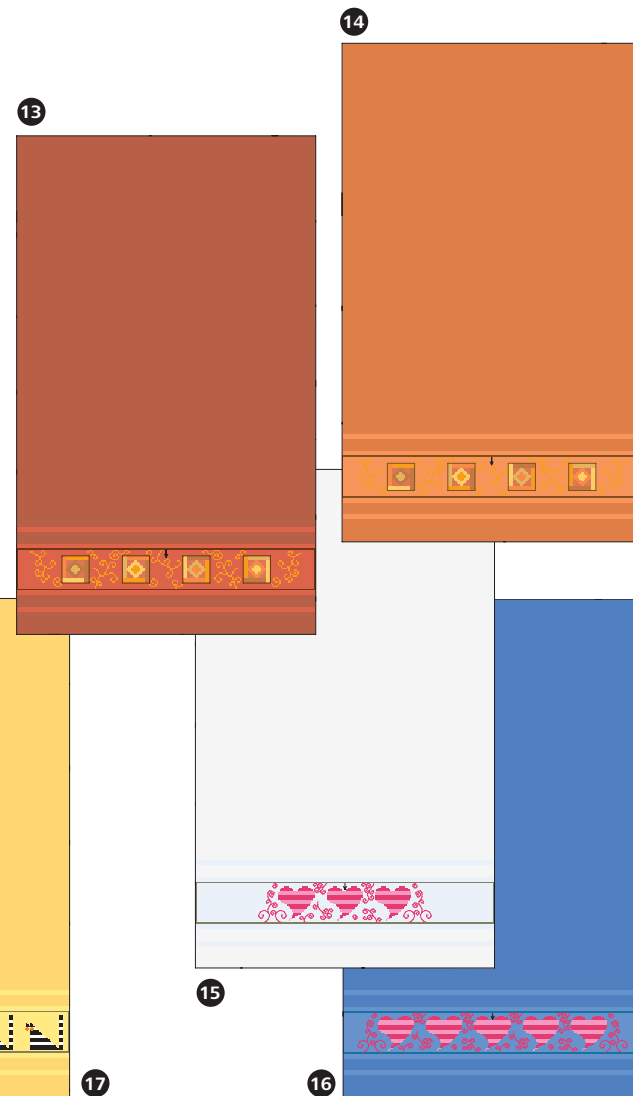
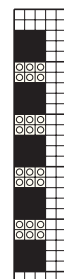
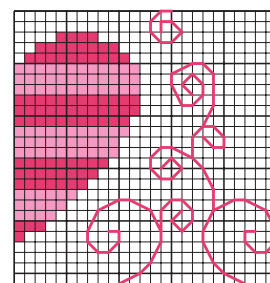
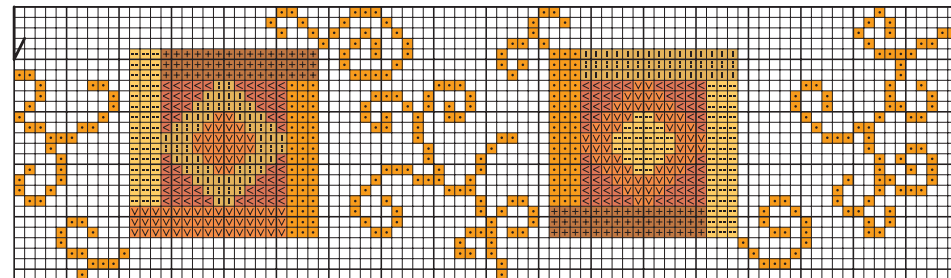
Anchor	DMC	Madeira	
	29	3801	2708 1
	55	604	0614 1

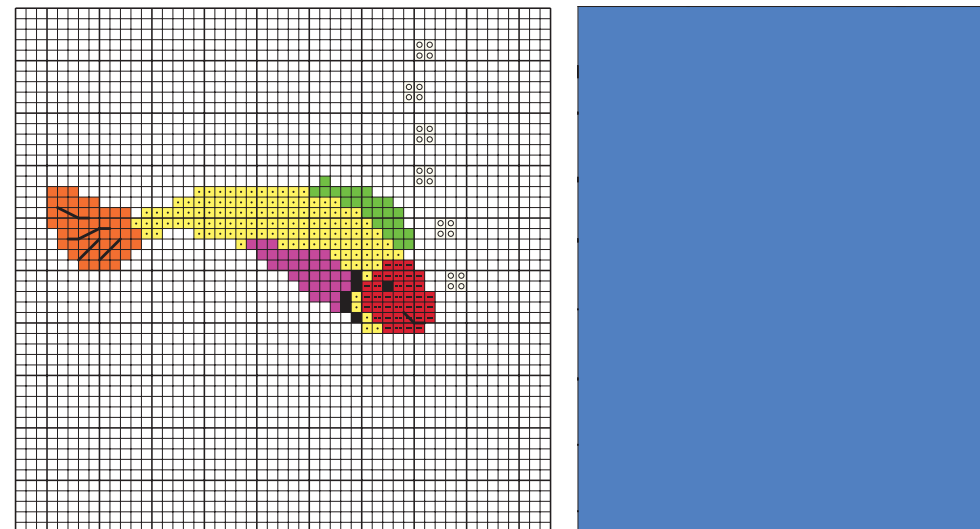
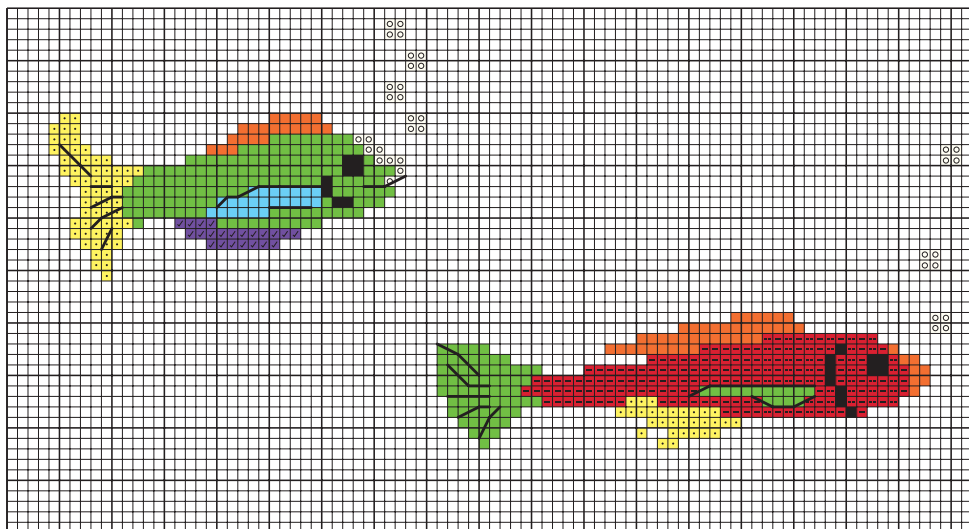
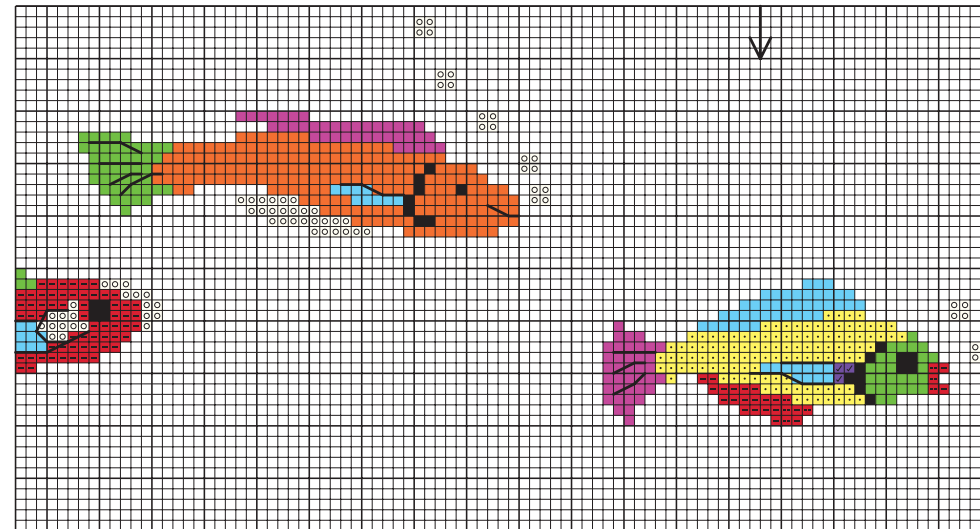
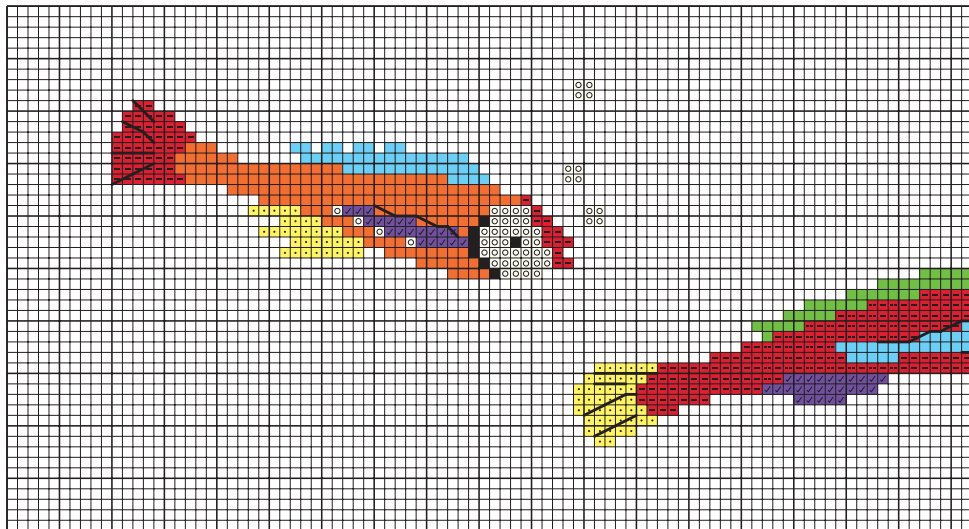
Gästetuch
 guest towel
 toalla de invitado
 гостевое полотенце
 30 x 50 cm · 12" x 20"

17 27/20

Anchor	DMC	Madeira	
	403	310	2400 1
	2	blanc	2402 1
	256	906	1411 1
	925	740	0205 1

Strängchen · skeins
 madejita · моток

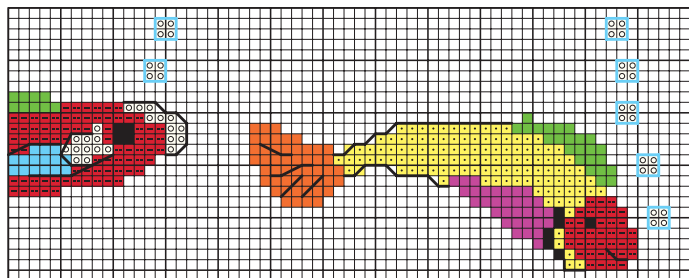
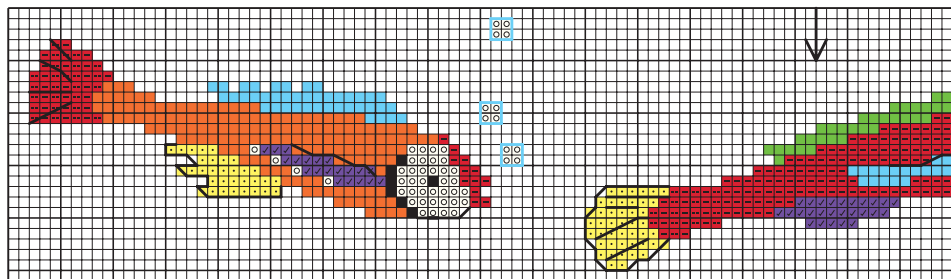




289	332	46	111	87	1090	238	2	403	Anchor
445	946	666	3837	3607	996	703	blanc	310	DMC
0301	0207	0210	0804	0708	1103	1306	2402	2400	Madeira
1	1	1	1	1	1	1	1	1	Strängchen · skeins madejita · моток

18 28/50
 Handtuch · handtowel
 toalla · полотенец
 50 x 100 cm · 20" x 39"





	Anchor	DMC	Madeira	
	289	445	0103	1
	332	946	0207	1
	46	666	0210	1
	111	3837	0804	1
	87	3607	0708	1
	1090	996	1103	1
	238	703	1306	1
	2	blanc	2402	1
	403	310	2400	1

Strängchen
skeins
madejita
моток

19 27/20

20 27/1

Gästetuch · guest towel · toalla de invitado · гостевое полотенце
30 x 50 cm · 12" x 20"



D 1 Kästchen in den Zählvorlagen = 1 Aidablöckchen

Zuerst die Kreuzstichmotive sticken, danach die Formen mit Rückstich oder Holbeinstich umranden und die Detaillinien über die fertigen Kreuzstiche sticken.

Stickgarn:

Kreuzstich, Sticktwist 2-fädig
Rückstich, Sticktwist 1-fädig

GB 1 square in stitch chart = 1 Aida square

Work the cross stitch motifs first, then outline them with Holbein stitch or backstitches. Lastly, add the fine line details in backstitches taken over the cross stitch.

Embroidery thread:

Cross stitch, embroidery floss 2 strands
Backstitch, embroidery floss 1 strand

ES 1 cuadrito en las muestras de puntos contados = 1 cuadrito Aida

Primero bordar los motivos a punto de cruz, después rematar las formas con puntadas atrás o bordado Holbein y bordar las líneas de detalle por encima de los puntos de cruz terminados.

Hilo para bordar:

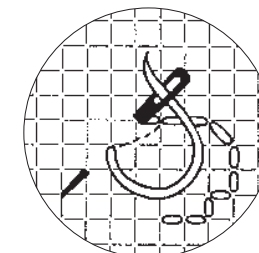
Punto de cruz, torzal de 2 cabos
Punto atrás, torzal de 1 cabo

RUS 1 клеточка в образце для счета = 1 квадратик/блоку АИДА

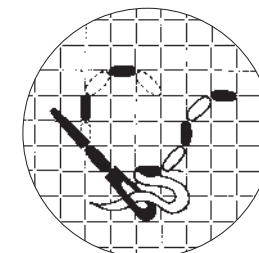
Сначала вышейте узоры крестом, затем окантуйте формы внакидку или двусторонним швом и вышейте линии деталей по готовой вышивке крестом.



Kreuzstich · cross stitch
punto de cruz · вышивка крестом



Rückstich · backstitch
punto atrás · шов внакидку



Holbeinstich · Holbein stitch
bordado Holbein · двусторонний шов

No. 197

Best.-Nr. 101/197

Kreuzstich · Cross Stitch
Punto de cruz · вышивка крестом

Preisgruppe VII



 **ZWEIGART®**

Zweigart & Sawitzki

Postfach 120

D-71043 Sindelfingen/Germany

www.zweigart.de www.zweigart.com



Muster ges. geschützt · Printed in Germany · 1008

Kreuzstich

Cross Stitch · Punto de cruz · вышивка крестом