



**ZWEIGART®**

MADE IN GERMANY

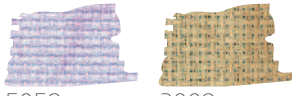
# NAMASTE



FREE CHART



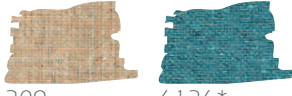
3706 STERN-AIDA



5059 (vintage) 3009 (vintage)

5,4 / cm = 14 ct. △ 100% CO  
 110 cm · 43" 48 x 53 cm

3348 NEWCASTLE



309 6136\* (metallic blue)

16,0 / cm = 40 ct. △ 100% LI / \* 93% LI / 7% met. PES  
 140 cm · 55"

4-fd/6-fd: Plattstich / Satin stitch 2-fd: Stielstich / Stek stitch  
 2-fd: Rückstich / Back stitch 2-fd: Knötchenstich / French knot

DIY IDEA

- 870 · 3042 · 2612
- 101 · 550 · 713
- 1062 · 597 · 1013
- 851 · 924 · 1706
- 1080 · 842 · 1907
- 358 · 801 · 2007
- 403 · 310 · 2400



ANCHOR · DMC · MADEIRA



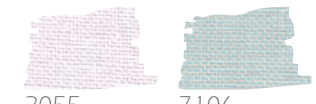
3984 MURANO



558 5045 9033

12,6 / cm = 32 ct. △ 52% CO 48% MD  
 140 cm · 55" 48 x 68 cm

3609 BELFAST



2055 7106

12,6 / cm = 32 ct. △ 100% LI  
 140 cm · 55" 48 x 68 cm

3281 CASHEL



5070

11,2 / cm = 28 ct. △ 100% LI  
 140 cm · 55" 48 x 68 cm



**ZWEIGART®**

**Zweigart & Sawitzki GmbH & Co. KG**

Postfach 120

D-71043 Sindelfingen

Germany

**[www.zweigart.com](http://www.zweigart.com)**

Druckfehler vorbehalten  
Subject to printing errors

Farbabweichungen möglich  
Differences in colour are possible

Printed in Germany 08/21  
20012/42

*stitch  
with  
love*